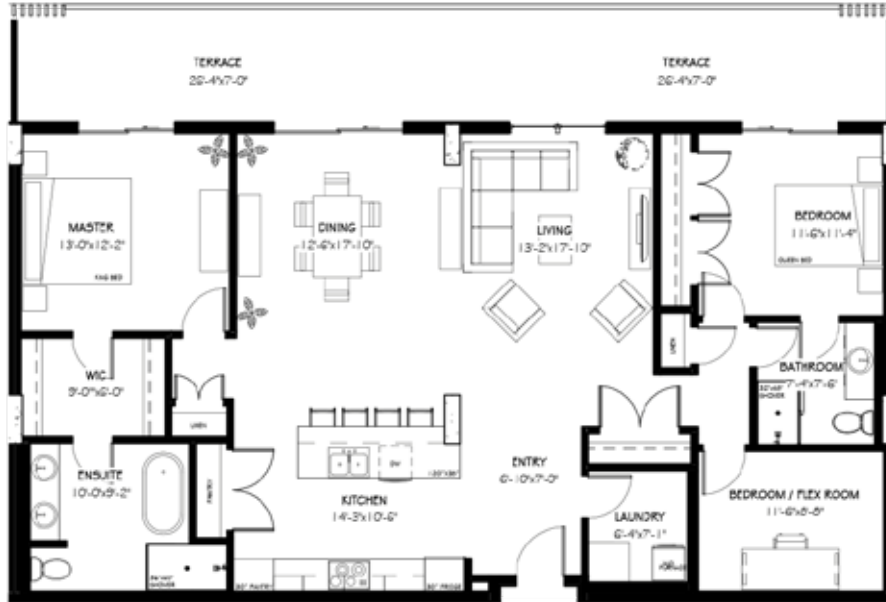




102 SCENIC DRIVE

# THE KRIZEL | 1985 SF\*

## 3 BEDROOMS | 2 BATHROOMS



\*1,599 SF interior, 386 SF terrace

## Features

- Expansive 7' deep full-width private terrace to integrate your indoor and outdoor living experience with access from master bedroom and living room.
- Entertainer's kitchen with seating at breakfast bar.
- Open concept living and dining area.
- Master bedroom with walk-in closet and five-piece spa ensuite.
- Flex room ideal for a home office or gym.
- Ample storage for all your extras.



TEXT / CALL US

403-330-4114

EMAIL US

sales@102scenicdrive.com

FOLLOW US

@102\_scenicdrive