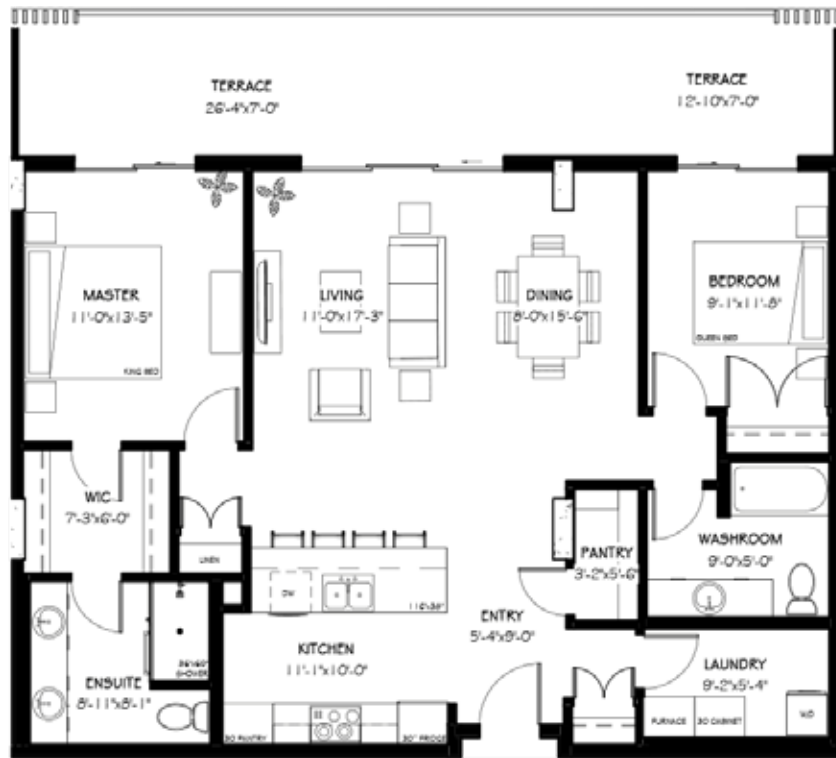




102 SCENIC DRIVE

THE LAUTNER | 1487 SF*

2 BEDROOMS | 2 BATHROOMS



*1,197 SF interior, 290 SF terrace

Features

- Expansive 7' deep full-width private terrace to integrate your indoor and outdoor living experience with access from master bedroom and living room.
- Entertainer's kitchen with seating at breakfast bar.
- Open concept living and dining area.
- Master bedroom with walk-in closet and four-piece ensuite.
- Optional layouts available from 1358 SF to 1513 SF.



TEXT / CALL US

403-330-4114

EMAIL US

sales@102scenicdrive.com

FOLLOW US

@102_scenicdrive

*The developer reserves the right to change plans, specifications, pricing, promotions, incentives, features, elevations, floor plans, designs, materials, orientations and dimensions without notice in its sole discretion. All renderings, colour schemes, floor plans, maps and displays are artist's conceptions and are not intended to be an actual depiction of the home or its surroundings. Conditions apply, see sales representative for full details. E&OE.