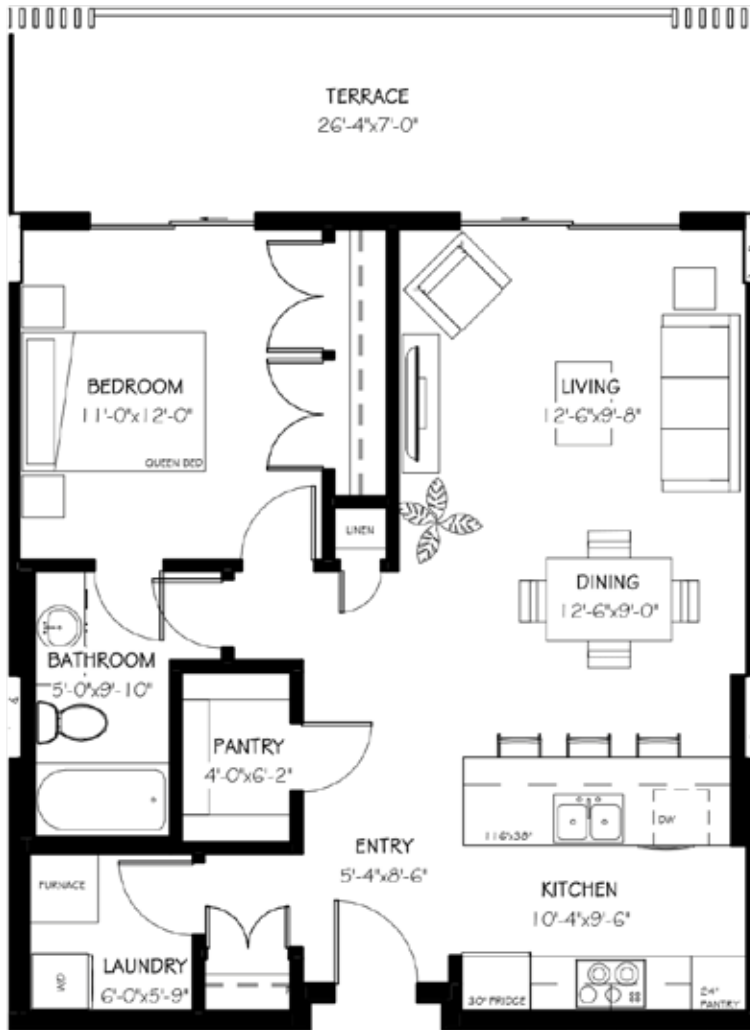




102 SCENIC DRIVE

# THE FREY | 990 SF\*

## 1 BEDROOM | 1 BATHROOM



\*797 SF interior, 193 SF terrace

### Features

- Expansive 7' deep full-width private terrace to integrate your indoor and outdoor living experience with access from master bedroom and living room.
- Entertainer's kitchen with seating at breakfast bar.
- Open concept living and dining area.
- Master bedroom with oversized closet and three-piece ensuite.
- Generous walk-in pantry to store all your extras.



TEXT/CALL US

403-330-4114

EMAIL US

sales@102scenicdrive.com

FOLLOW US

@102\_scenicdrive

\*The developer reserves the right to change plans, specifications, pricing, promotions, incentives, features, elevations, floor plans, designs, materials, orientations and dimensions without notice in its sole discretion. All renderings, colour schemes, floor plans, maps and displays are artists' conceptions and are not intended to be an actual depiction of the home or its surroundings. Conditions apply, see sales representative for full details, E&OE.