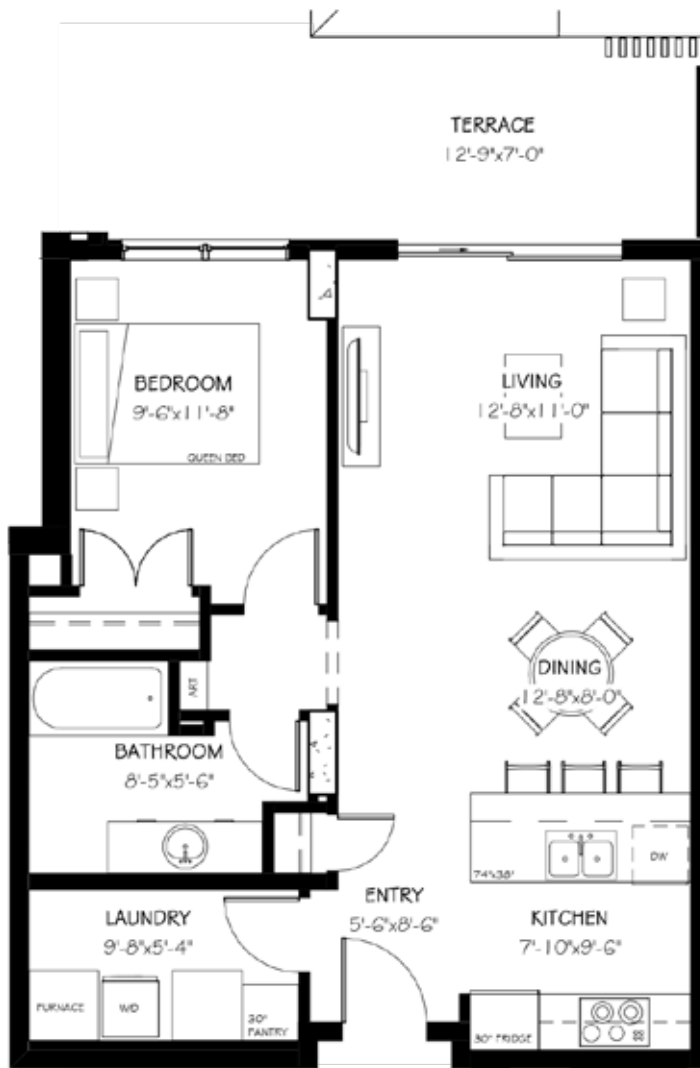


THE CODY | 870 SF*

1 BEDROOM | 1 BATHROOM



*723 SF interior, 147 SF terrace

Features

- Expansive 7' deep full-width private terrace to integrate your indoor and outdoor living experience with access from master bedroom and living room.
- Entertainer's kitchen with seating at breakfast bar.
- Open concept living and dining area.
- Master bedroom with oversized closet and three-piece ensuite.



TEXT/CALL US
403-330-4114

EMAIL US
sales@102scenicdrive.com

FOLLOW US
@102_scenicdrive