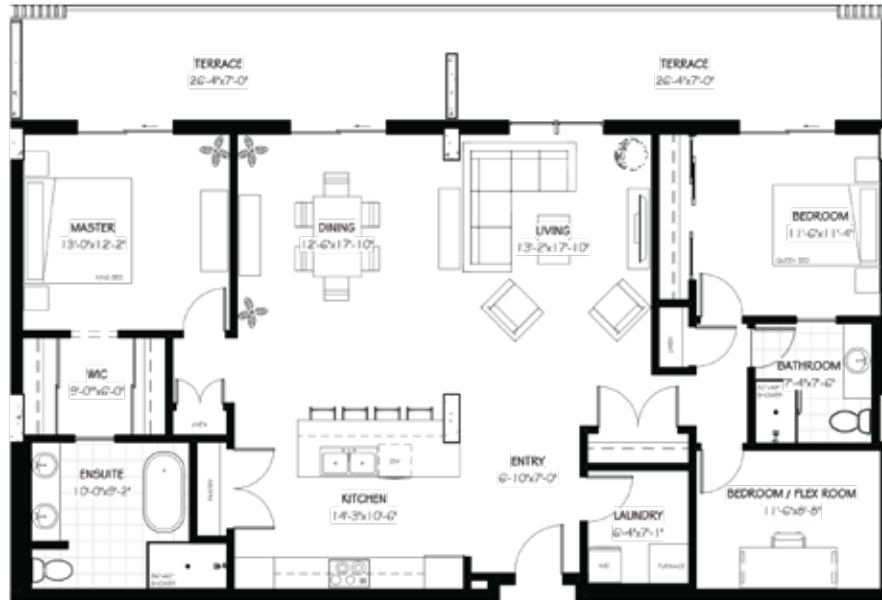




102 SCENIC DRIVE

# THE KRIZEL | 1985 SF\*

3 BEDROOMS | 2 BATHROOMS



\*1,599 SF interior, 386 SF terrace

## Features

- Expansive 7' deep full-width private terrace to integrate your indoor and outdoor living experience with access from master bedroom and living room.
- Entertainer's kitchen with seating at breakfast bar.
- Open concept living and dining area.
- Master bedroom with walk-in closet and five-piece spa ensuite.
- Flex room ideal for a home office or gym.
- Ample storage for all your extras.



TEXT/CALL US

403-330-4114

EMAIL US

sales@102scenicdrive.com

FOLLOW US

@102\_scenicdrive

\*The developer reserves the right to change plans, specifications, pricing, promotions, incentives, features, elevations, floor plans, designs, materials, amenities and dimensions without notice in its sole discretion. All renderings, colour schemes, floor plans, maps and displays are artist's conceptions and are not intended to be an actual depiction of the home or its surroundings. Conditions apply, see sales representative for full details, E&OE.

102SCENICDRIVE.COM