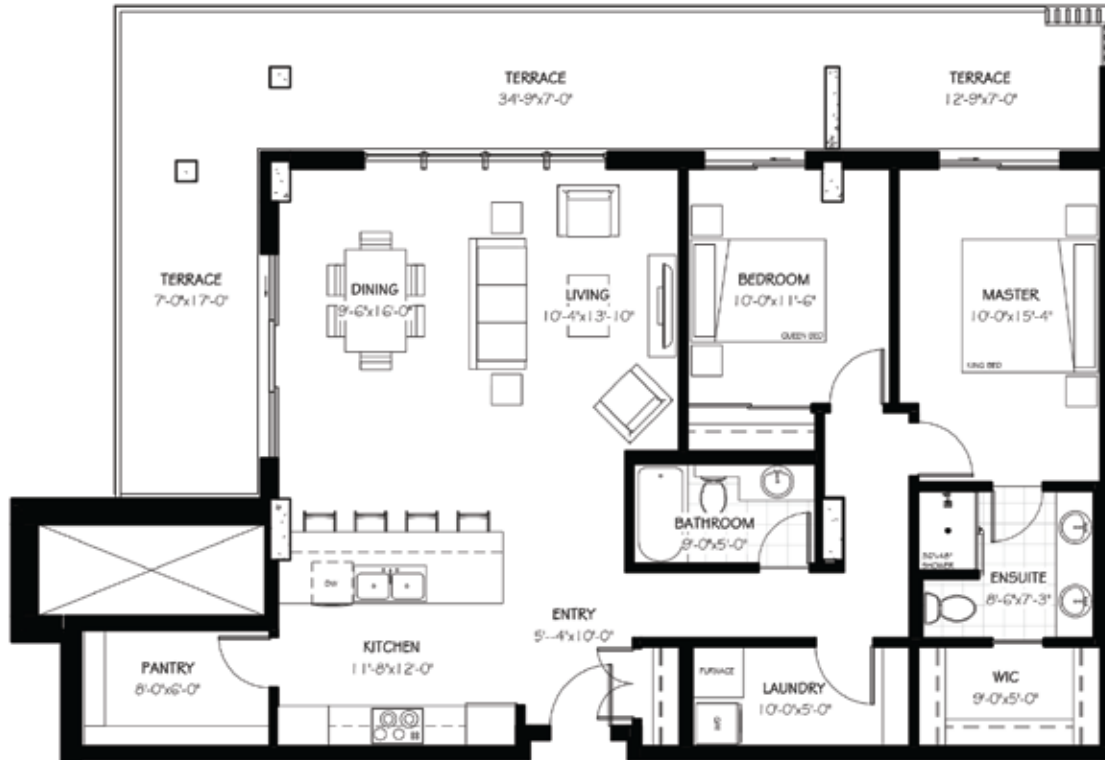




102 SCENIC DRIVE

THE HENNINGSEN | 1760 SF*

2 BEDROOMS | 2 BATHROOMS



*1,293 SF interior, 467 SF terrace

Features

- Spectacular 7' deep wraparound corner private terrace to integrate your indoor and outdoor living experience with access from master bedroom and living room.
- Entertainer's kitchen with seating at breakfast bar.
- Bright, open-concept living and dining area with large windows.
- Master bedroom with walk-in closet and four-piece ensuite.
- Ample storage for all your extras, including a spacious walk-in pantry.



TEXT/CALL US

403-330-4114

EMAIL US

sales@102scenicdrive.com

FOLLOW US

@102_scenicdrive

*The developer reserves the right to change plans, specifications, pricing, promotions, incentives, features, elevations, floor plans, designs, materials, amenities and dimensions without notice in its sole discretion. All renderings, colour schemes, floor plans, maps and displays are artist's conceptions and are not intended to be an actual depiction of the home or its surroundings. Conditions apply, see sales representative for full details, E&OE.